

Trade Focus



INSIDE THIS ISSUE:

<i>Stock Focus</i>	2	<i>News Focus</i>	3
<i>Future Focus</i>	2	<i>Trading Table</i>	4

Market View

Four days of this week are gone and let's see what we have on the indices- Bank Nifty has seen a fluctuation of 200 points (11700-11900) while the nifty has seen about 100 points (5850-5950). That's it. And if you are an index trader and wondering why you have not made money in this week, don't blame yourself and no need to look all over the place. You can make money only when there is range, volatility and volume. Mostly, all these three elements have been missing.

So, the real action has been in the stocks. But here too nothing much in the big names. Take a look. The ranges so far in some names with the range for this week in brackets are Reliance (15), Tisco (15), SBI (100), Infosys (60), ICI Bank (30) etc etc. So here again, not much and if you have been trading these then once again, hardly any money. The "real" action therefore has been in the small cap stocks. Suzlon (6) Polaris (20), Ster Tech (8) etc etc... In short, large caps move about 1% or less while mid and small caps have moved about 10-20% in the same period of 4 days. Now, one may state that it is always thus. But our job as traders is to chase the stock that is moving the most. Not to pontificate on quality. Do you really care whether your day trading money came from Tisco or TV18? If you were not in the latter group, you did not make money- period.

How long will this last? Well we have discussed that issue all thru this week, even as we kept exhorting our readers to be part of the momentum play in the small and mid cap stocks. We think that this situation will persist until there is some news or event that can take our attention away from momentum. We don't see anything on the horizon until around middle of the month (when results flow would begin). So enjoy this ride for some more time.

Like we have been saying in the last few days, large cap futures are dealt with by having one long and another short so that at least one of them (and sometimes both too!) come thru. Be aggressive on the small cap futures side as well as in momentum investing as the good times continue to roll.



Trade Focus

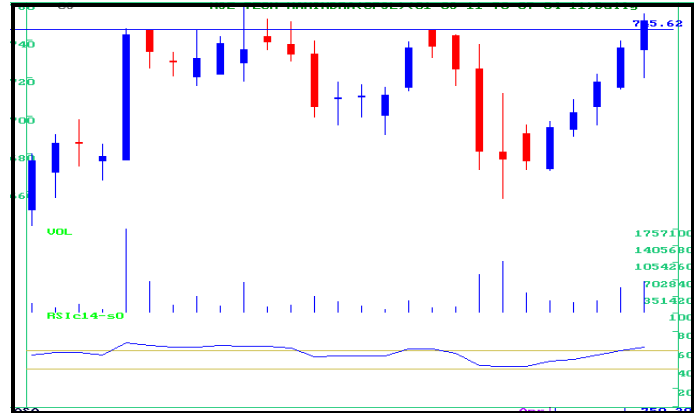


Stock Focus

TECH MAHINDRA LIMITED

Entry	Stop	Target
Buy above 750	7 Points	760/765
Or on Dips to 741	6 Points	750/754

This stock has moved above its 100 DMA and 200 DMA, which is a positive sign for the stock. Bulls have made a strong move since 5 days and moved above its resistance line of many months which gave clear signals that they have taken over control of the counter. Buying was seen with volumes and RSI too has moved upwards. Buy.



Source : ASA

DEWAN HOUSING FINANCE

Entry	Stop	Target
Sell below 255	2.5 Points	252/250/247
Sell Rallies 258	2.5 Points	254/250

This stock has been unable to breach its previous short term resistance line of many months and saw aggressive selloff. Bulls could not continue the momentum any further and bears took over the charge. RSI also moved down afresh with volumes. Overall sentiment continues to remain weak. Sell.



Source : ASA

Future Focus

NIFTY FUTURE

Buy Nifty on dips to near 5870 stop 5850 for rise to 5930

Buy Nifty above 5940 stop 5920 for rise to 5981.

STOCK FUTURE

Buy Triveni above 104 stop below 102 target 108

Sell ONGC around 293-296 stop above 298 target 288

Note:

- >> Wait for 5 minutes before executing any trade.
- >> If it is a buy trade then wait to break the 5 minute high.
- >> If it is a sell recommendation then wait for 5 minutes and then the prices must decline below the 5 Minute low to initiate the trade.
- >> Any change will be intimated through SMS.

Trade Focus



Day Trading Table

SCRIPT	CLOSE	SECOND SUPPORT	FIRST SUPPORT	PIVOT	FIRST RESISTANCE	SECOND RESISTANCE
ABB	805.7	785	795	802	813	820
ACC	1128.85	1032	1081	1109	1157	1186
AMBUJACEM	151.45	147	149	151	153	155
AXISBANK	1445.75	1399	1422	1440	1464	1481
BHARTIARTL	357	341	349	354	362	366
BHEL	2195.15	2159	2177	2195	2213	2231
BPCL	613.8	597	606	611	619	625
CAIRN	343.95	336	340	347	351	357
CIPLA	320.45	318	319	321	322	324
DLF	269.8	265	267	271	274	277
GAIL	473.15	464	468	475	480	486
GRASIM	2522.1	2484	2503	2531	2550	2579
HCLTECH	497.85	485	491	496	502	507
HDFC	715.7	687	701	711	725	734
HDFCBANK	2354.75	2319	2337	2357	2375	2396
HEROHONDA	1694.85	1659	1677	1693	1711	1727
HINDALCO	216.05	211	213	215	218	220
HINDUNILVR	276	273	274	277	279	281
ICICIBANK	1104	1083	1094	1104	1114	1125
IDEA	66.35	64	65	66	67	68
INFOSYSTCH	3245.9	3224	3235	3249	3259	3273
ITC	182.55	180	181	182	184	185
JINDALSTEL	708.6	698	703	710	716	723
LT	1669.5	1635	1652	1664	1682	1694
M&M	733.3	713	723	731	741	749
MARUTI	1278.25	1260	1269	1277	1286	1294
NATIONALUM	98.1	97	97	99	99	101
NTPC	186.15	181	184	188	191	195
ONGC	291.6	284	288	294	298	305
PNB	1199.45	1181	1190	1200	1209	1219
POWERGRID	104.95	103	104	105	106	108
RANBAXY	461.5	454	458	464	468	474
RCOM	110.75	109	110	111	112	113
RELCAPITAL	624.5	616	620	627	631	638
RELIANCE	1041.9	1029	1035	1042	1048	1054
RELINFRA	693.45	684	689	695	700	706
RPOWER	135.65	134	135	136	137	138

Trade Focus



Day Trading Table cont'd

SCRIPT	CLOSE	SECOND SUPPORT	FIRST SUPPORT	PIVOT	FIRST RESISTANCE	SECOND RESISTANCE
SAIL	173.95	170	172	174	176	177
SBIN	2812.9	2748	2780	2808	2840	2868
SIEMENS	895.3	888	892	894	898	901
STER	174.7	172	173	175	177	179
SUNPHARMA	441.25	435	438	441	445	448
SUZLON	53.45	50	52	53	55	56
TATACOMM	255.2	250	253	257	259	263
TATAMOTORS	1290.9	1264	1278	1290	1303	1315
TATAPOWER	1319.85	1296	1308	1315	1327	1334
TATASTEEL	638.35	630	634	638	642	646
TCS	1199.2	1180	1190	1205	1214	1230
UNITECH	47.75	43	45	47	50	51
WIPRO	472.45	453	463	468	478	483
SENSEX	19591.18	19470	19530	19598	19659	19726
NIFTY	5885.70	5846	5866	5886	5906	5926

Disclaimer

This document has been sent by The Muthoot Group and is meant for the recipient for use as intended and not for circulation. This document should not be reported or copied or made available to others. The information contained herein is from the public domain or sources believed to be reliable. While reasonable care has been taken to ensure that information given is at the time believed to be fair and correct and opinions based thereupon are reasonable, due to the very nature of research it cannot be warranted or represented that it is accurate or complete and it should not be relied upon as such. The Muthoot Group, its directors and employees, will not in any way be responsible for the contents of this report. This is not an offer to sell or a solicitation to buy any securities. The securities discussed in this report may not be suitable for all investors. Investors must make their own investment decision based on their own investment objectives, goals and financial position and based on their own analysis. The Muthoot Group, its directors or employees, may from time to time, have positions in, or options on, and buy and sell securities referred to herein. The Muthoot Group, during the normal course of business, from time to time, may solicit from or perform investment banking or other services for any company mentioned in this document.